

3rd ROMANIAN FORUM of Metabolic Hepatology

transforming MASLD care
through multidisciplinary
action and long-term vision

Bucharest | 12 March 2026 | Hotel Crowne Plaza



ROMANIAN FORUM



3rd ROMANIAN FORUM of Metabolic Hepatology

transforming MASLD care
through multidisciplinary
action and long-term vision

National Faculty

- Dragoș Bumbacea, Bucharest
- Sorina Diaconu, Bucharest
- Gindrovel Dumitra, Craiova
- Dan Gheonea, Craiova
- Liana Gheorghe, Bucharest
- Lucia Grijac, Bucharest
- Răzvan Hainăroșie, Bucharest
- Laura Huiban, Iasi
- Speranța Iacob, Bucharest
- Gener Ismail, Bucharest
- Ioana Lupescu, Bucharest
- Ligia Moșneagă, Bucharest
- Bogdan Obrișcă, Bucharest
- Corina Pop, Bucharest
- Roxana Rimbaș, Bucharest
- Anca Sîrbu, Bucharest
- Roxana Șirli, Timisoara
- Anca Trifan, Iasi
- Mihaela Udrescu, Bucharest
- Dragoș Vinereanu, Bucharest
- Mihaela Vladu, Craiova

International Faculty

- Jeffrey Lazarus, Barcelona, Spain
- Ines Mega, Lisbon, Portugal
- Vlad Ratziu, Paris, France
- Nancy Reau, Chicago, USA
- Heiner Wedemeyer, Hannover, Germany



Presidential Foreword

Recently the World Health Organization (WHO) Executive Board advanced the resolution of recognizing steatotic liver disease (SLD) as a missing piece of non-communicable disease (NCD) and proposed to formally include chronic liver disease into national prevention, early detection and management strategies. This resolution is set to be discussed at the World Health Assembly in May 2026 and represents an important step forward for global liver health.

It is a recognition of what clinicians and researchers in the field of hepatology across the world have long understood and supported. The WHO decision reflects the huge amount of scientific work and evidence accumulating and demonstrating that chronic liver disease represents one of the global leading causes of preventable illness and mortality. Moreover, this milestone reflects the growing political recognition of liver disease burden and supports the sustained advocacy to integrate liver health within the global and national NCD agenda.

In December 2021, the first EASL-Lancet Commission on Liver Disease in Europe launched its first report highlighting the alarming increase in liver-related mortality in many European countries. The second report of EASL-Lancet Commission, that will be published this year, reviewed the progress, addressing the challenges of acting in various health systems and policies across Europe and highlighting the need to align European actions to support implementation of a set of evidence-based recommendations.

Chronic liver disease with cirrhosis accounts for over 2 million deaths annually (4% of all deaths worldwide) and ranks as the 11th most common cause of death and the 15th leading cause of disability-adjusted life years (DALYs) globally. Due to the increase in alcohol consumption and the prevalence of metabolic risk factors, a dramatic increase in end-stage liver disease, need for liver transplantation and mortality linked to alcohol-related and metabolic-associated liver disease is anticipated in the following decades. In this landscape Romania has one of the highest age-standardized prevalence (2500-2750 cases/10⁵ inh) and an age-standardized death rate of 30-40 cases/10⁵inh) imposing immediate intervention and calibrated strategies.

As hepatologists, we welcome these decisions and actions and launch a national scientific and public movement engaging and collaborating with partners from related medical specialties, patients' associations, stakeholders, as well as policymakers in order to develop evidence-based policies and patients' care pathways adapted to our national specifics in order for promoting liver health and developing articulate strategies supporting prevention, early identification, risk assessment and management for improving the outcomes of our patients.

It is possible to significantly reduce the liver disease burden and mortality across Romania, by leveraging our professional potential, inter-disciplinary collaboration, coordinated action, and evidence-based policy interventions.

**Liana Gheorghe
Corina Pop**

Thursday 12th March 2026

Co-Chair:	Liana Gheorghe, MD, PhD Corina Pop, MD, PhD
Scientific secretary:	Speranța Iacob, MD, PhD
8.00 - 8.50	Welcome coffee, registration and networking
8.50 - 9.00	Welcome
9.00 - 10.40	MASLD NEW INSIGHTS: FROM EPIDEMIOLOGY TO THERAPEUTIC APPROACH Chair: Liana Gheorghe, Nancy Reau
9.00 - 9.20	MASLD epidemiology and phenotypes. The MASLD “liver disease burden paradox” - Corina Pop, Sorina Diaconu, Bucharest, Romania
9.20 - 9.40	Expert perspective on the proactive diagnosis and risk stratification - Roxana Șirli, Timișoara, Romania
9.40 - 10.00	Redefining MASLD care: pathogenesis and targets for therapeutic interventions - Nancy Reau, Chicago, USA
10.00 - 10.20	Understanding stigma and barriers in MASLD: Towards inclusive and systemic change - Ines Mega, Lisbon, Portugal
10.20 - 10.40	Discussions
10.40 - 11.00	Coffee break
11.00 - 11.30	State of the Art Lecture Introduction: Corina Pop, Bucharest, Romania Invited Lecture: Jeffrey Lazarus, Barcelona, Spain MASLD - A public health threat at the crossroads of metabolic multimorbidity
11.30 - 13.10	ADVANCING RESEARCH AND CARE IN STEATOTIC LIVER DISEASE: HOPE AND A PLAN TO ACTION Chair: Corina Pop, Jeffrey Lazarus
11.30 - 11.50	Innovative ideas to change the practice: Multimodal imaging and AI application for non-invasive assessment of liver fibrosis - Ioana Lupescu, Bucharest, Romania

11.50 - 12.10	How does the MASLD therapeutic pipeline look: New drugs, new hopes - Vlad Ratziu, Paris, France
12.10 - 12.30	New perspectives in MetALD - challenges in diagnosis, risk assessment and patient-centric management - Liana Gheorghe, Bucharest, Romania
12.30 - 12.50	Align MASLD clinical practice with metabolic multimorbidity: The role of the MD Dream Team - Anca Trifan, Laura Huiban, Iași, Romania
12.50 - 13.10	Discussions
13.10 - 14.10	Lunch
14.10 - 14.40	State of the Art Lecture Introduction: Liana Gheorghe, Bucharest, Romania Invited Lecture: Heiner Wedemeyer, Hannover, Germany Implementing the German SLD Registry - A cornerstone for National MASLD strategy
14.40 - 15.00	Coffee Break
15.00 - 17.00	SRGH Position on MASLD as a public health threat in Romania. The need for action. An initiative of SRGH & RoALD in collaboration with scientific associations involved in the management of metabolic multimorbidities Multidisciplinary Working Group on MASLD/MASH/MASH CIRRHOSIS
15.00 - 15.20	Draft presentation
15.20 - 17.00	Points of view - Debates - MASLD in Primary Care: Prevention, Lifestyle and Therapeutic Intervention • MASLD case-finding in primary care: A simple pathway for the real world - Mihaela Udrescu • Turning lifestyle into treatment: How family doctors can change the course of MASLD - Gindrovel Dumitru • The family doctor as MASLD care coordinator in a multimorbid patient - Ligia Moșneagă

- Blood donation centres as early warning points for metabolic risk
- Lucia Grijac

- **MASLD in Non-Gastroenterology Specialty Care:** Secondary prevention focused on cardiovascular mortality, diabetes complications - chronic kidney disease, cancer, obstructive sleep apnea etc.
 - **Cardiology** - Dragoş Vinereanu, Roxana Rimbaş - Cardiovascular disease and mortality in MASLD: The main outcome to prevent
 - **Endocrinology** - Anca Sîrbu - Addressing obesity to improve liver health
 - **Diabetes** - Mihaela Vladu - Type 2 Diabetes and MASLD: Dual risk, shared responsibility
 - **Pneumology** - Dragoş Bumbacea – Crossroads between MASLD/metabolic syndrome and chronic respiratory diseases - opportunities for integrative patient care
 - **Otorhinolaryngology** - Răzvan Hainăroşie - Obstructive sleep apnea in obesity and MASLD - The ENT Surgeon's contribution to metabolic liver health
 - **Nephrology** - Bogdan Obrişcă, Gener Ismail - Kidney and Liver in the same metabolic story

- **MASLD in Gastroenterology Care:** Prevention of liver-related outcomes (cirrhosis, decompensation, need for liver transplantation and mortality). A Clinical Care Pathway calibrated to Romania
• Speranţa Iacob

- **Public Health Approach** - Jeffrey Lazarus – MASLD/MASH Policy Landscape 2026: Romania's Position in the Global Index

INVITED: Clinicians in the field of gastroenterology/hepatology, endocrinology, diabetology, cardiology, pneumology/ENT, nephrology, general practitioners, public health, researchers, patient's advocacy groups, industry stakeholders, policy makers

AIMS:

An opportunity to action:

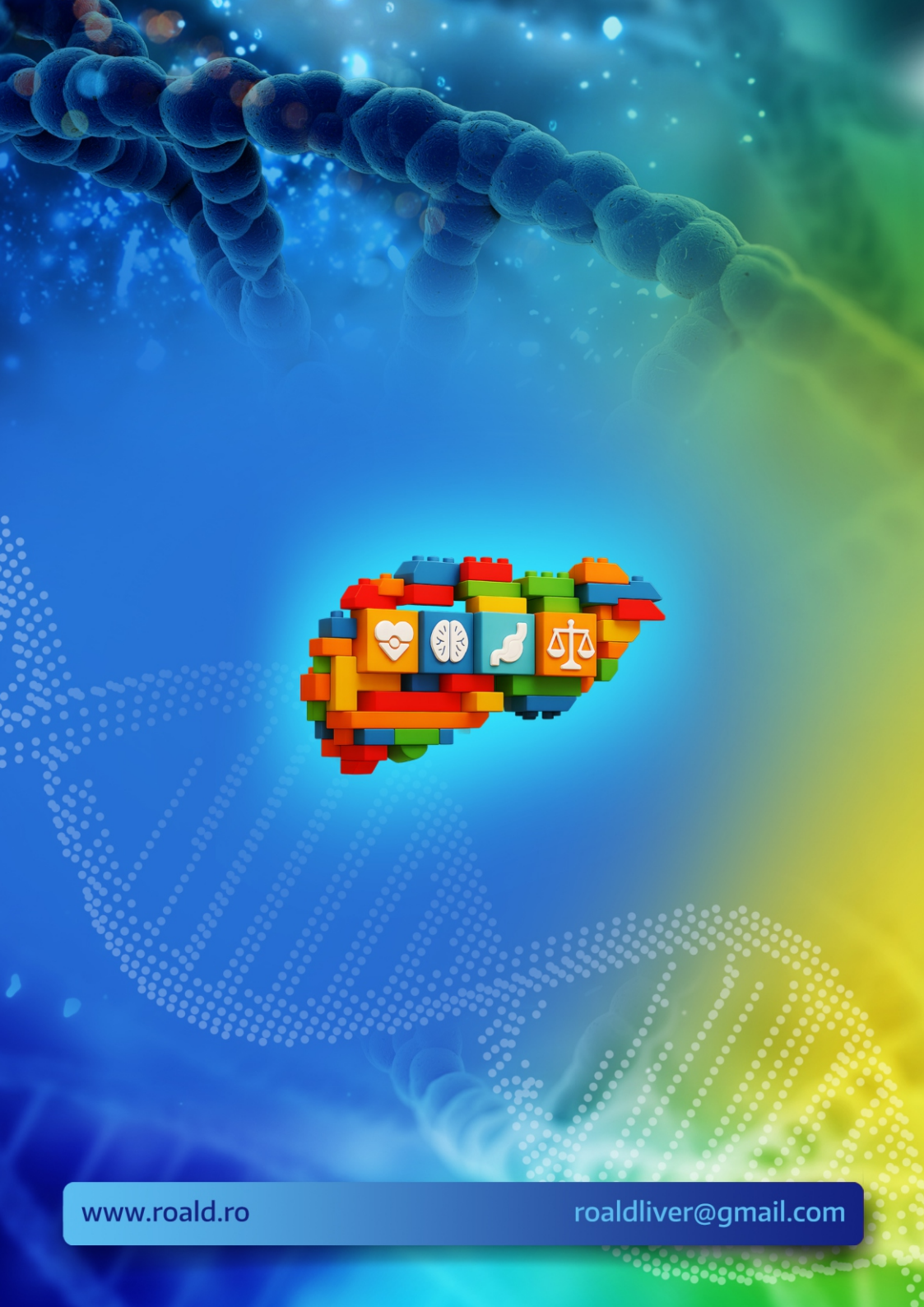
- Increase early detection and intervention for progressive MASLD
- Integrate MASLD care into the management of metabolic multimorbidity
- Establish a clinical care pathway for MASLD
- Elaborate a public health strategy engaging NGOs, primary and specialty care physicians, key stakeholders, healthcare payers and policymakers

ACTION PLAN

1. Rise the bar of MASLD & MetALD awareness among community
2. Develop and implement liver health literacy and education
3. Recognise steatotic liver disease as a preventable non-communicable disease requiring prevention, early detection and care strategies
4. Provide specialists with updated guidance on the proactive diagnosis and management of "at risk" MASLD
5. Build a common understanding on MASLD impact on population health and health system in Romania, through multidisciplinary research
6. Establish a national multidisciplinary team operating as a task force in this area and promote cross-sectorial collaboration and leverage national network of practitioners engaged in managing NCD
7. Integrate pathways of care for liver disease with other chronic disease pathways, managing multi-morbidity
8. Engage policy maker in promoting Sustainable Liver Health in Romania
9. Elaborate and implement a realistic and calibrated strategic action plan

OUTPUT: A document outlining priorities, timelines and responsible institutions developed based on this working session, to be validated and endorsed by the SRGH-RoALD and the Multidisciplinary Task Force. This document will serve as the foundational framework for coordinated national efforts in MASLD prevention, early detection and integrated care.

- 17.00 - 17.20 **Medical event supported by Novo Nordisk** 
 Title: **SEMAGLUTIDE: Reversing Metabolic Dysfunction to Reduce Hepatic Burden**
 Speakers: **Anca Trifan, Dan Gheonea**
- 17.20 - 17.30 **Final remarks and conclusions**



www.roald.ro

roaldliver@gmail.com